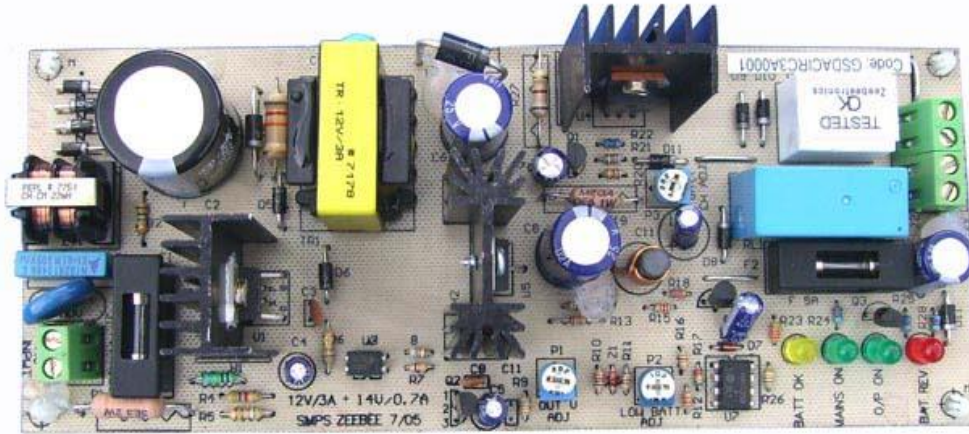


# 12V 3A DC SMPS POWER SUPPLY with BATTERY CHARGER



This Power supply cum battery charger has been designed for use in applications, where an uninterrupted DC supply of 12Volts is required, for critical operations such as Security and Safety Panels, etc.

It has a Mains Driven Switch Mode Power Supply which delivers 12V at 3A steady state and 4A Peak, and can handle a wide variation of Line Input Voltage. Additionally, it has an auxiliary output for battery charging which is a Constant Voltage- Current Limited system.

Incase of Mains failure, the output is connected to the Battery. The Battery Voltage is monitored by additional circuitry, which prevents deep discharge of the Battery.

The Power Supply can also be safely operated without connecting a Battery, in case Battery backup is not required. The circuitry is protected against damage due to Battery Reversal, Output short-circuit, and Dead Battery Charging. An array of LEDs indicate the status of the system.

**NOTE:** The above SMPS is also available without the Battery Charger at a lower cost.

## **Technical Specifications:**

Input	:150V to 275V AC - 2 Wire System.
Output	:12V / 3Amps ( 5Amps Peak) (Output presettable from 11 to 14V approx)
Regulation	: $\pm 2\%$
Ripple & Noise	: less than 1% of output voltage.
Battery Charge Output	: 12V/7AH Battery Charging at 13.6V, 700mA Max.
Maximum Battery Charging Current	: 800mA $\pm$ 200mA with charging output shorted.
Battery Deep Discharge Protection	: ( Settable from 8 to 11V approx).
Diagnostics	: LEDs for "Mains On", "Battery OK", "Output On" and "Battery Reversed"
Physical Dimensions	: 205mm (L) x 75mm (W) x 55mm (H)
Mounting	: M3 Spacers provided at 4 corners of Circuit Board.